



Systems for the electronic production



The planning and realisation of custom-specific, complex systems, such as complete production units or lines is ENGIMATEC TECONA's particular strength. By use of the following standard components, complex systems at an attractive price can be realized.

Conveyors

- Flexible lay out of production lines by extreme modularity
- Length 400 – 2400 mm
- Height 830 – 950 mm
- Transport length and height optional, according to customer's requirements. Elegant packed design, due to control system as well as power supply are integrated in conveyor rails (no switch cabinet)
- Communication interface SMEMA, Siemens or as required
- Safe transport, even of very thin PCB's: PCB's to get jammed is impossible



Loaders LM Unloaders UM

- Less floor space required due to compact design
- A patented safety curtain in magazine tower, enables free access and view to magazines
- High availability of machines by automatical adjustment of magazines in the magazine table
- Reduction of length of lines by optional 90 ° magazine transport
- Display with plain text

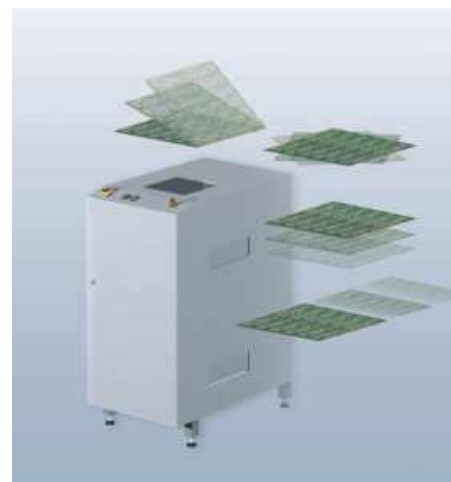


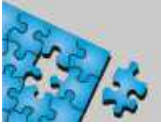
Handling systems generally

- Buffer station, flip station, lift station, turn station, traverser
- Advantage of the modular concept: short delivery times, easy handling, training and maintenance, few spare parts required for service

PCB dimensions

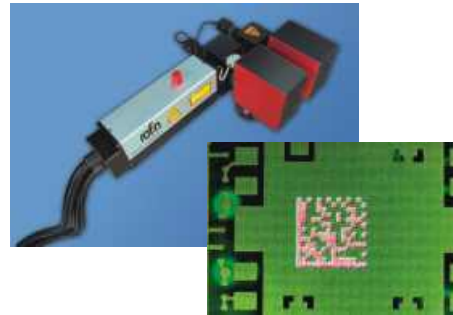
M-Series	L	100	330 mm
	B	50	260 mm
L-Series	L	100	500 mm
	B	50	500 mm





Laser marking

- Solution for each marking task by use of CO2 or YAG Laser
- Large marking areas without movable axis by optional double-head system
- Lower costs for operation and production at CO2 Laser, copper is not uncovered, highest process safety, as independent of soldermask thickness
- 100 % verification of marking without loss of time at low cost
- Easy programming



Optical Test Station

- Test station „Inline“ or “stand alone”
- High identification certainty due to colour signal processing even with a difficult colour ambient
- Easy programming in Teach-in-Mode
- Test area max. 500 x 500 mm
- Positioning systems up to 4 axis



Production lines / Special systems

- Planning, realisation and installation as general entrepreneur
- Development and production of special systems with a high technical demand
- Integration of equipment other than ENGMATEC TECONA



Test Tunnel Systems DTA

- „Inline“- component test under extreme temperature conditions
- Temperature area – 40 °/ + 145 °C
- Defined test temperature over whole test period, due to contact stations in temperature chambers
- Application: 100 % test for mass production



ENGMATEC TECONA GmbH

Fritz-Reichle-Ring 5
78315 Radolfzell
Tel. +49 (7732) 99 98 0
Fax +49 (7732) 99 98 88
Email: info@engmatec.de
www.engmatec.de