

Production-systems for the electronics industry

In-line function



Optical Test Station VT 10 and VT 20

Optical Test Station VT 10

- In-line test unit
- High resolution miniature colour cameras
- Excellent picture quality with low illumination, with no reflection on the test objects
- High identification certainty due to real colour signal evaluation
- Test program generation in teach-in mode without programming knowledge

Optical Test Station VT 20

- Stand-alone test station
- Ergonomic front operation
- Picture evaluation as VT 10

Optical Test Station
VT 20



Optical Test Station
VT 10

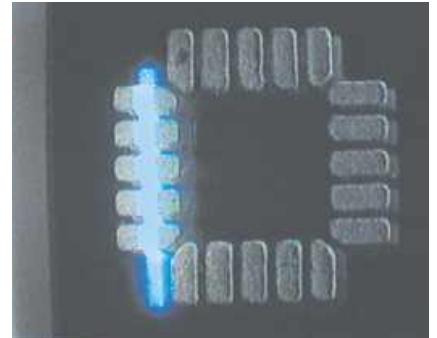




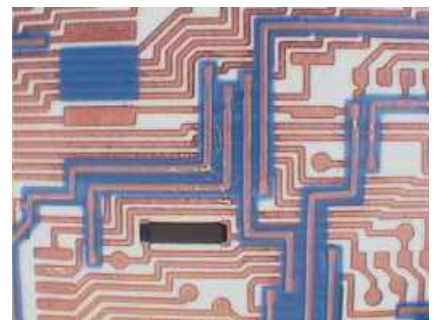
General characteristics

- Transfer width: 50...600 mm
- Transfer length: max. 850 mm
- Test range: max 550 x 550 mm
- High resolution 15" TFT monitor, Windows screen surface
- Extremely precise 4-axial positioning system
- Transport system for circuit boards, solder frames and work-piece carriers
- Optional integrated return feed conveyor
- Manual width adjustment, automatic optional
- Communications interface as required
- Design meets CE, electrostatic and safety regulations
- Tough powder-coated finish

Application examples of standard execution VT 10 and VT 20



Solder paste print



Layout

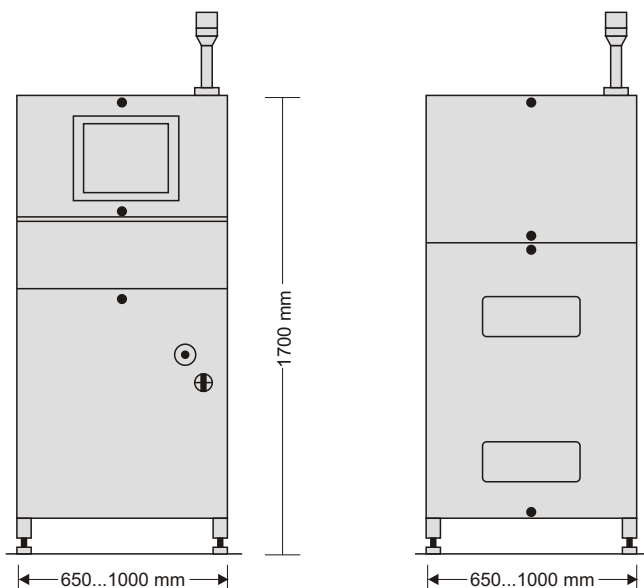


Solder points and component placement



Dimensions and forms

Dimensions



Products and performances

Handling and transport systems

- for circuit boards
- for solder frames
- for work-piece carriers
- Transport conveyors
- Vertical lifts
- Horizontal lifts
- Turning stations
- Flip units
- Loading/unloading units
- In-line buffer (FIFO/LIFO)
- Turning lift stations
- Path through stations
- Systems with manual and automatic magazine handling

Test systems

- In-line or autarkic
- Manual or automatic process
- In normal or extreme temperature ranges (alternating from -40°C to 125°C)
- In-circuit test
- Function test
- Test with automatic alignment
- Picture processing
- High frequency
- Special test systems

Special systems

- Handling and transport
- Automatic assembly

Inter-linking of manufacturing processes

- TECONA products
- Products from other sources
- Planning
- Handling and transport systems
- Integration of manufacturing systems
- HOST communication
- Process visualisation
- PPS
- Data remote transmission