



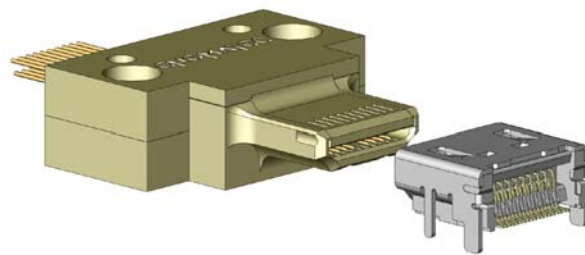
HDMI-test plug – now available by ENGMATEC!

The portfolio of the ENGMATEC GmbH within the range of industrial-strength test plugs has recently been extended by a further type of plug.

HDMI - High Definition Multimedia Interface - was introduced by the industry for the consumer electronics range some years ago. The trend more and more digital components and contents in digitized form had required the development of an interface for the all-digital transmission of audio and video data. The necessary digital-to-analog conversion could no longer meet the demands made on it by its users.

Today entertainment electronics would be nothing without HDMI connections. For television, DVD and Blu-ray Players or play consoles they have long since asserted their position as standard.

For testing this interface the ENGMATEC GmbH has already developed an appropriate 19pin contacting plug. Like all testing-plugs from the house of ENGMATEC the plug has been designed specially for application with incircuit and function tests.



The following accessories are additionally available:

- Floating mounting and self-centring mounting shoes
- Cable and plug assembly to customers' requirements.
- Complete connecting unit with pneumatic actuation and sensors for position monitoring

ENGMATEC's delivery program for connectors covers all usual sockets such as Western mini, USB and TAE. Special forms, special lengths and coded plug forms are realizable on customer's request.

